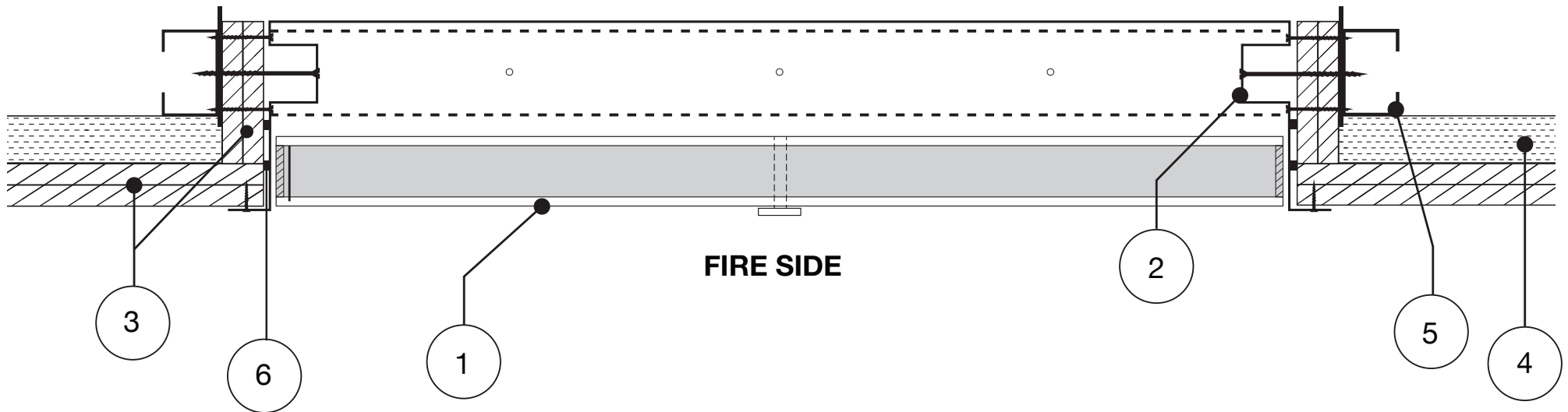


FIRE RATED HATCHES

CEILING INSTALLATION GUIDELINE



-
1. Door
 2. Steel Hatch Frame
 3. Two Layers 13mm Fire Rated Plasterboard
 4. Steel Furring Channel
 5. Steel Stud or Proprietary Strong Back
 6. Fire Sealant
-

Installation Instructions

1. Mark out and cut out an area in the ceiling to suit the dimensions of the access panel. Please note the cut-out size is 10mm greater than the access panel (eg.600 x 600, cut out size 610 x 610).
2. Place into position, screw through the fixing holes in the frame into the steel stud, as per the above diagram.

Note: Unihatch Fire Rated Access Panels require fire rated plaster board lining beside the hatch frame, and sealant, as per note 6/3.
The above diagram is not to scale.



UNIHATCH